



PROMINENT FEATURE

Latest LCD panel, 3DP LX1500 up 16000ANSI lumens for brightness, 3000:1 high contrast ratio provides 3 panel LCD imaging delivers a rich, color-saturated picture.

Electric lens can be moved horizontally or up and down, comes with keystone correction.

Includes most professional input configurations, including 5BNC and DVI-D.

Optional modules include dual (HD/SD) SDI and HD wireless receiver.

Four kinds of modules can be embedded interface board, providing a comprehensive interface configuration.

Provides optional network control module for remote projector control debugging.

User-selectable dual-lamp or four lamp working group working group.

Built-in image management software.

New 10bit color video image processor for richer colors.



3DP LX1500



ABOUT

3 panel LCD imaging delivers a rich, color-saturated picture. Supports analog and digital video input in all color standards up-to 1080p.

New 10bit video processor for color image colors richer. Optimize the dynamic range of luminance signal, with the gamma settings and compensation, LX1500 contrast to a more realistic picture, image more clear.

High brightness technology and cooling technology, combines the latest optical engine, significantly improve the light efficiency, and achieve a high brightness, high contrast, high stability and high resolution.

OPTICS

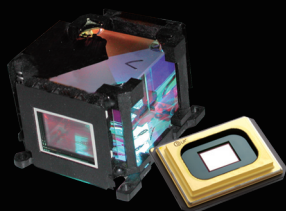
Machine Size (mm)	(L x H x W) 815x251x581
Weight	36.5kg
Power consumption	1800W
Temperature (up to)	35 ° C (95 ° F)
Power Requirements	200-240V AC, 50/60Hz

SPECIFICATIONS AT A GLANCE

Display Technology	3LCD™ Technology
Brightness (ISO)	16000
Contrast Ratio	3000:1
Brightness uniformity	Resolution 90%
Screen Resolution	1024 × 768
Color degree	16.7 million
Lamp	330W NSHA × 4
Lamp life	3000hour(standard) 4000hour(Economic)
Front view	5.7 ° up feet

OPERATION

Vertical Digital Keystone Correction	± 40 °
Horizontal keystone correction	± 20 °
Image diagonal (max.)	600 "
Keystone	up and down about 10:0 ~ 0:10 ~ 2:3
Image width (maximum)	12.2m



3D perception enables immersive, engaging and meaningful visual experiences for simulation and control center applications. Through a global network of certified partners, our mission is to enable you in

Achieving Your Vision
www.3D-perception.com.cn